



# GAT MONTHLY MEMBERSHIP PROGRESS REPORT

Results as of: 3/31/2022

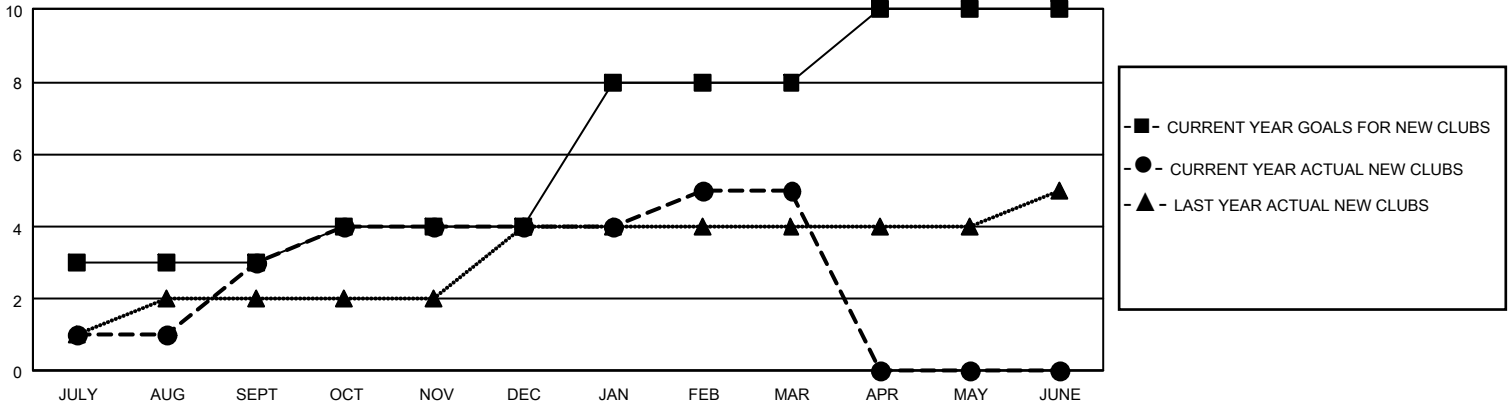
## GMT Constitutional Area 3, Group J

REPORT DOES NOT INCLUDE CLUBS IN UNDISTRICTED AREAS.

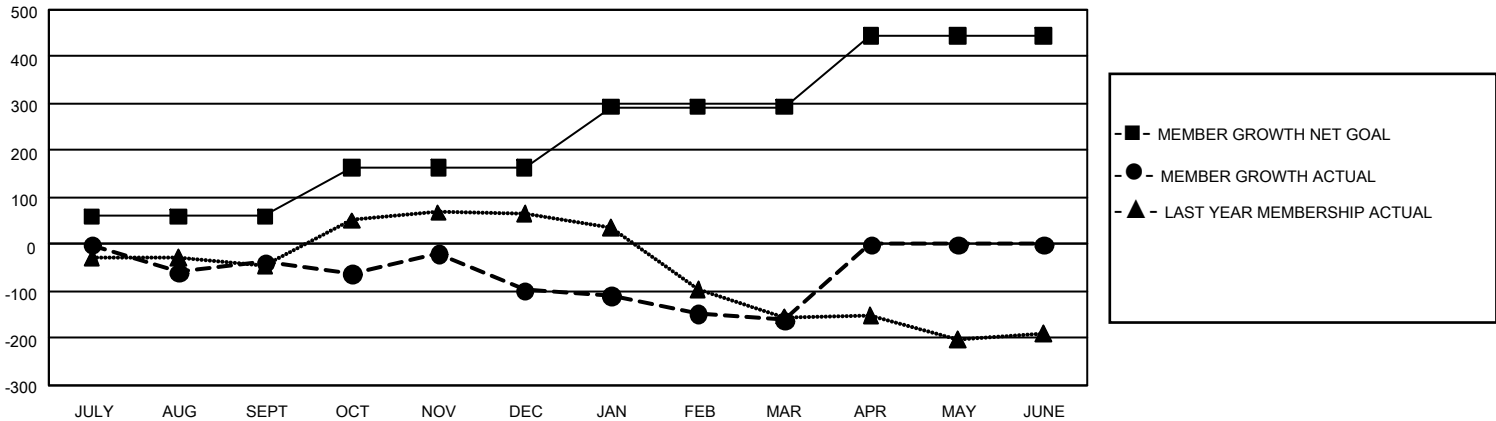
Clubs			
RESULTS FOR 2021-2022			
QUARTER	NEW CLUB GOAL	NEW CLUBS	DROPPED CLUBS
JULY/AUG/SEPT	9	3	5
OCT/NOV/DEC	3	1	3
JAN/FEB/MAR	12	1	2
APR/MAY/JUNE	6	0	0

Members			
RESULTS FOR 2021-2022			
QUARTER	MEMBER GROWTH NET GOAL	MEMBER GROWTH ACTUAL	DROPPED MEMBERS ACTUAL (including transfers)
JULY/AUG/SEPT	60	170	185
OCT/NOV/DEC	103	244	279
JAN/FEB/MAR	130	123	148
APR/MAY/JUNE	151	0	0

GOALS AND ACTUAL NEW CLUBS CUMULATIVE



GOALS AND ACTUAL MEMBERS CUMULATIVE



<b>DROPPED CLUBS: 9</b>	77 CLUBS OF 200 ADDED 1 OR MORE NEW MEMBERS	<u>GENDER DISTRIBUTION</u>	
<u>DROPPED MEMBERS</u>		MALE	2,809 (55.72%)
DECEASED	57	FEMALE	2,232 (44.28%)
CLUB CANCELLED	110	NON BINARY	0 (0.00%)
OTHER	445	PREFER NOT TO ANSWER	0 (0.00%)
<b>TOTAL</b>	<b>612</b>	TOTAL FAMILY UNIT MEMBERS	2,156
	<a href="#">CLICK HERE FOR CUMULATIVE MEMBERSHIP DATA</a>	FAMILY MEMBERS PAYING HALF DUES	1,135